

# Plate, Printing and Paper Varieties



Imperforate



Preprinting  
paper crease



Irregular  
ink wiping



Shaded upper lip



Pregumming  
offset



Stitch watermark



Stitch watermark



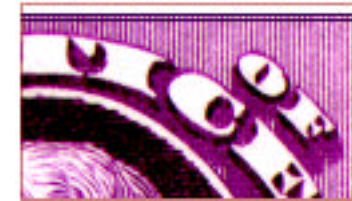
Double transfer in top margins  
of both upper stamps



Type I



Double transfer  
in top margin



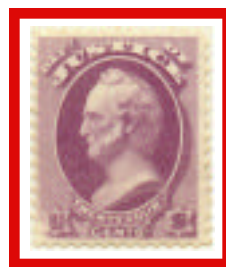
Type II



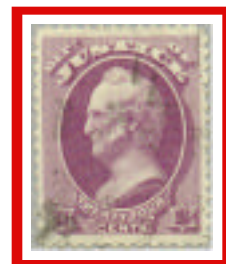
Double transfer  
text & numeral '3'  
(Position 56)



Short transfer  
(Position 3)



Short transfer LL  
Discovery copy  
(Position 98)



Only recorded  
used copy



Double transfer in left margin  
UR stamp (Position 27)