

Haiti's 1c Royal Palm of 1892

Introduction:

The 1c value was issued in December 1892, along with the 2c and 7c. The 3c and 5c were not issued until 1894, and the 20c in 1895. All were recess engraved and printed by Skipper & East of London, except for the 20c lithographed stamp of 1895. Sheets consisted of 100 stamps (10 x 10) on unwatermarked wove paper and perforated guage 14 x 14.

Aims:

- (1) To illustrate the three different colors of the 1c value which ought to be catalogued – violet, lilac, and brown lilac.
- (2) to comprehensively examine and illustrate various stages of the production and usage of the 1c stamp.



1c violet



1c lilac



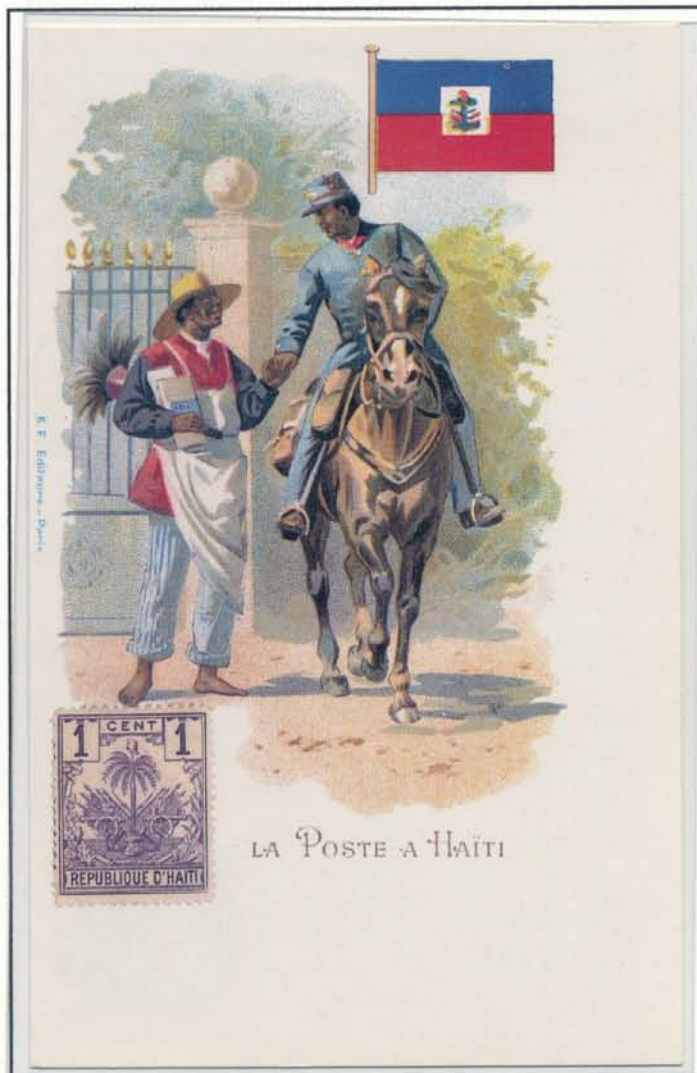
1c brown lilac



1c essays, imperforate and perforated.
Likely made in Germany.
Only known examples of the 1c in brown.



Undenominated recess engraved die proof.
Only known example.



Similar postcards and trade cards depicting the 2c value of the series are encountered with some frequency. This postcard, depicting the 1c is uncommon. Published by Künzli Frères circa 1900. Only two examples known.

Scope:

Essays, proofs, varieties, and multiples are included. Several have been previously unrecorded, and/or represent the only known examples, and/or represent the largest known multiples. Covers illustrate various internal and external rates of the period some of which are uncommon - i.e. 2c internal rate, 3c merchandise rate to Europe, 5c Caribbean single weight letter rate), Earliest known usages, town and transit cancels are also included.

Epecially significant items are highlighted in red.